

# **Sri A.S.N.M. Government College (Autonomous)**

**(NAAC Re-accredited by 'B' Grade with 2.61 CGPA)**

**Palakol, West Godavari District – 534260**

## **FEEDBACK ANALYSIS - TEACHER 2021-2022**

Feedback on curriculum is a regular phenomenon in Sri A. S. N. M Government College as it aids in the quality sustenance and enrichment of the curriculum. The college updates the curriculum periodically by closely adhering to the policies and guidelines issued by the concerned regulatory authorities.

Besides catering to the needs of the students and the demands of the employers, frequent meetings are convened wherein the Management, Controllers of Examinations, Academic Coordinator of Curricular Affairs, IQAC Coordinator and the Heads of the Departments discuss Curriculum Based issues. Structured Feedback on individual courses and the syllabus of respective departments are collected semester wise from Students, Teachers, Employers and Alumni. The collected feedback is analyzed by each department. Based on the stakeholders' suggestions and recommendations, the curriculum is designed, revised and new skill-oriented courses are introduced from time to time in the Board of Studies.

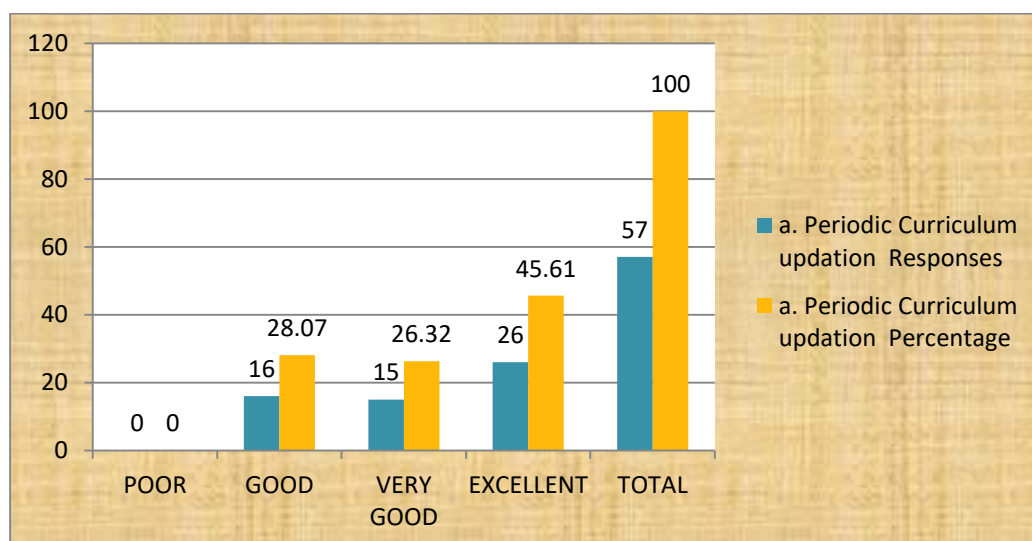
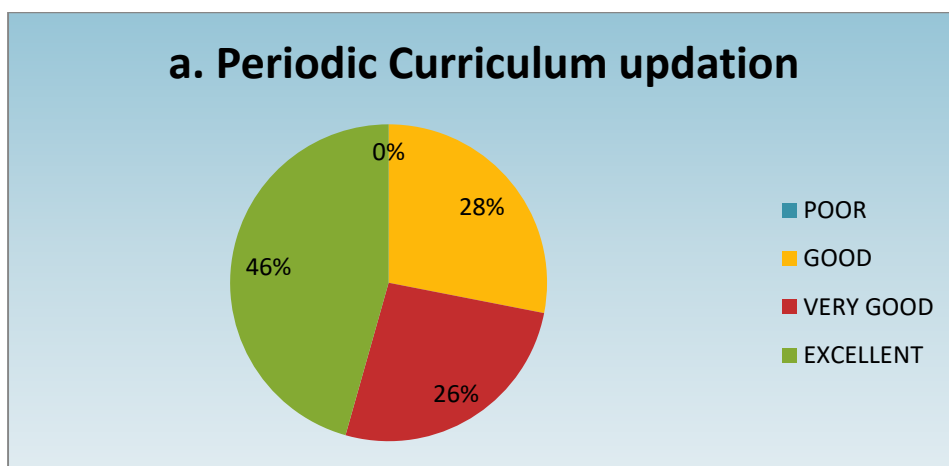
The Draft Syllabus is revised in the Board of Studies and finalized. The suggestions of the University Nominees, the Subject Experts, Industrialists and Alumni are incorporated and the Action Taken Report is presented in the next Board of studies. The curriculum is then approved in the Academic Council and the Governing Body. The Suggestions brought forth by the distinguished members of the Academic Council and the Governing Body are realized and Action taken Report are presented and documented in the minutes of the Subsequent Academic Council and Governing Body.

Structured Feedback on individual courses and syllabus is obtained from the students and course teachers the end of each year; from the alumni during the Annual Alumni Meet and from the Industrialists and Employers during formal meetings. The stakeholders respond to Questionnaires with 09 questions on syllabus on the scales as stated herein:

 Excellent	- E
 Very Good	- VG
 Good	- G
 Poor	- P

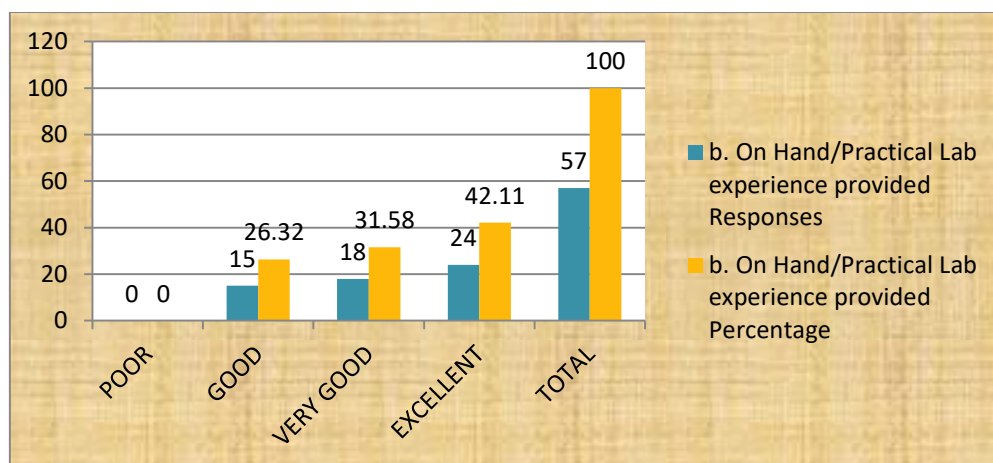
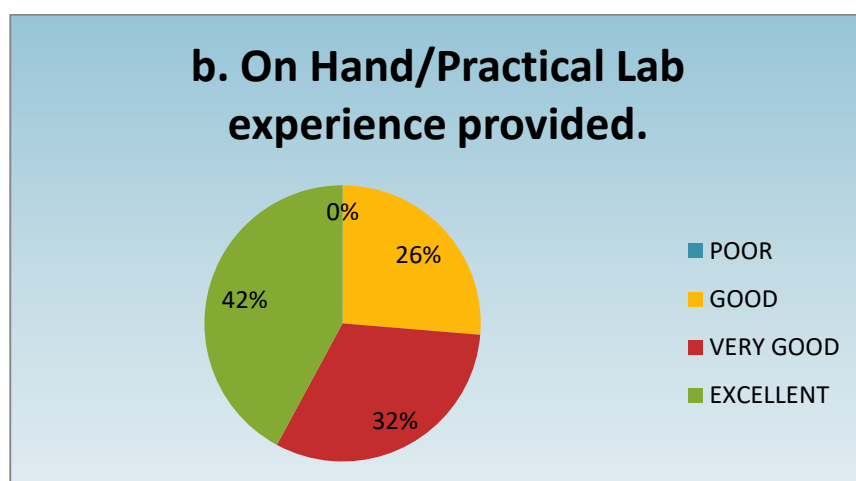
**Total Number of Respondent: 57**

a. Periodic Curriculum updation		
Options	Responses	Percentage
POOR	0	0.00
GOOD	16	28.07
VERY GOOD	15	26.32
EXCELLENT	26	45.61
<b>TOTAL</b>	<b>57</b>	<b>100</b>



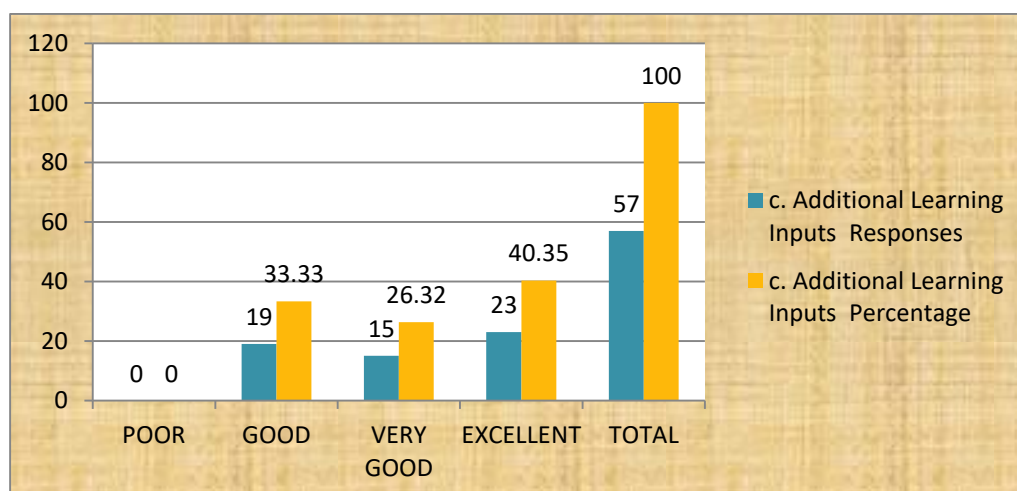
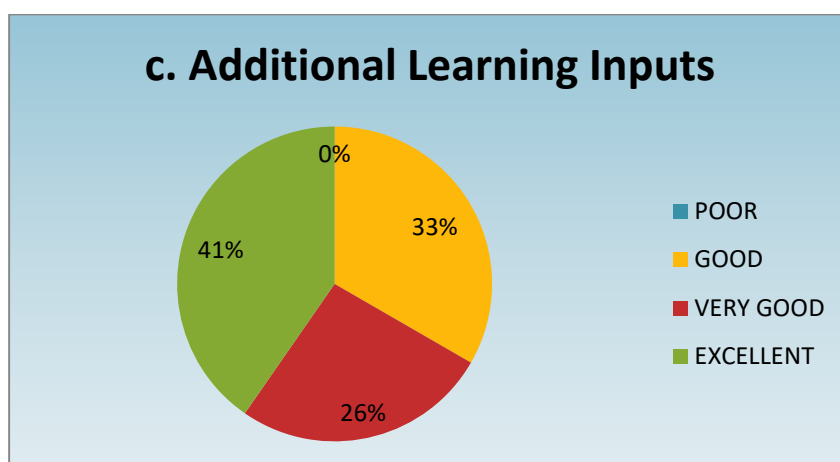
45.61% of teachers expressed the curriculum updation well, **26.32%** are given **very good** rating, 28.07 are given as Good rating, and **0% are given poor rating**.

<b>b. On Hand/Practical Lab experience provided</b>		
Options	Responses	Percentage
POOR	0	0.00
GOOD	15	26.32
VERY GOOD	18	31.58
EXCELLENT	24	42.11
<b>TOTAL</b>	<b>57</b>	<b>100.00</b>



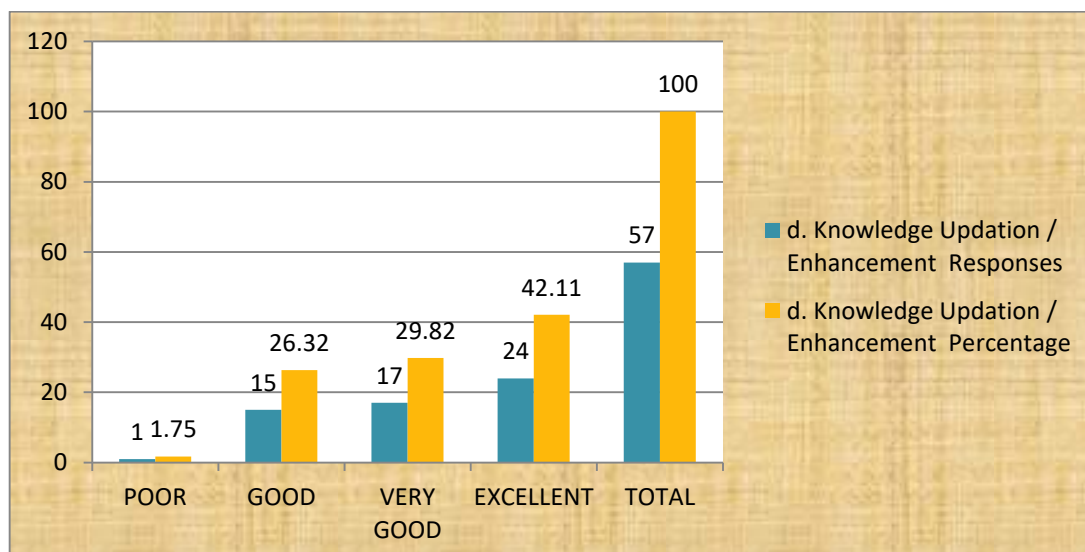
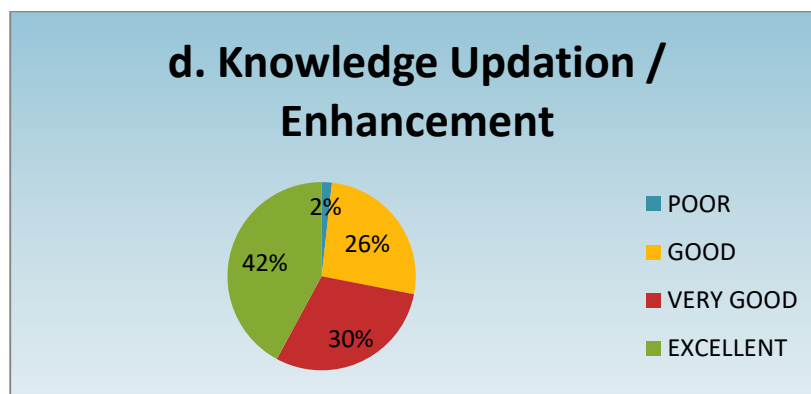
Facilities are available in Lab are satisfied with most of the teachers. **42% are given excellent** feedback, more than 50% given good and very good range, **0% are given Poor response.**

c. Additional Learning Inputs		
Options	Responses	Percentage
POOR	0	0.00
GOOD	19	33.33
VERY GOOD	15	26.32
EXCELLENT	23	40.35
<b>TOTAL</b>	<b>57</b>	<b>100</b>



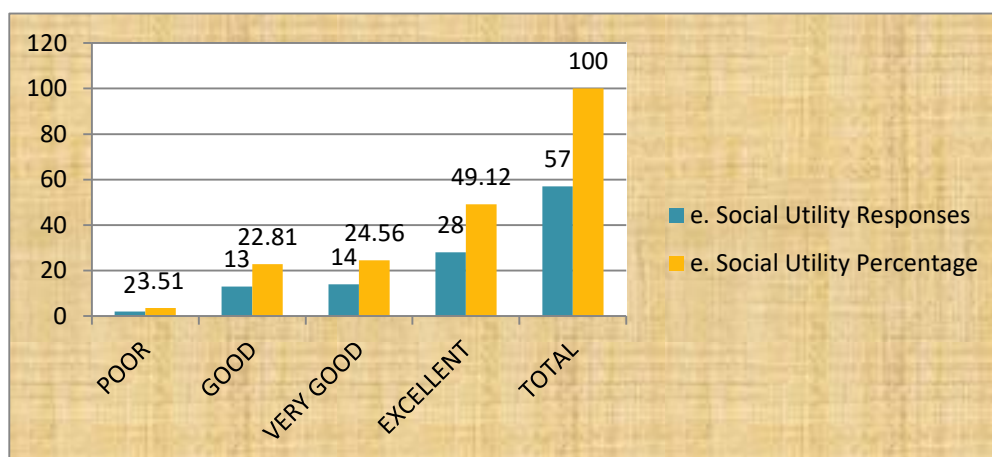
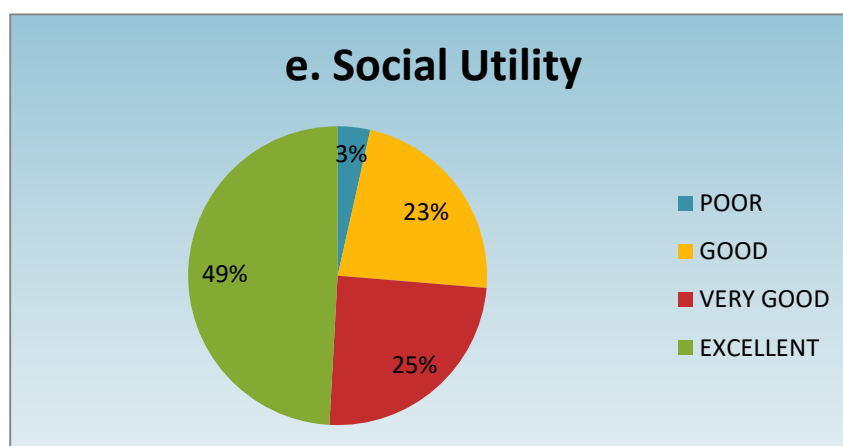
Most of the departments have added additional input in their curriculum which was done BOS, so, most of the teachers given good response . i.e., **40 % given excellent response, 0% are given poor response.**

d. Knowledge Updation / Enhancement		
Options	Responses	Percentage
POOR	1	1.75
GOOD	15	26.32
VERY GOOD	17	29.82
EXCELLENT	24	42.11
<b>TOTAL</b>	<b>57</b>	<b>100</b>



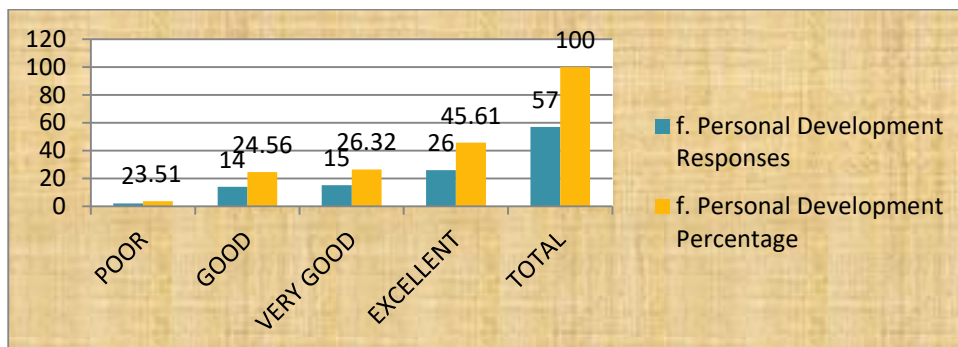
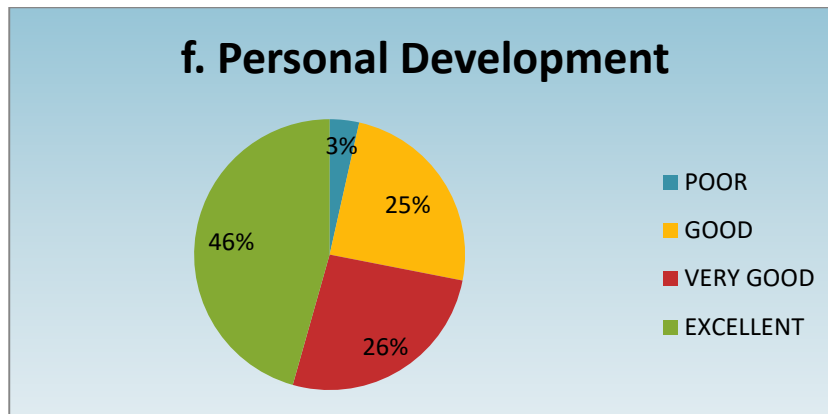
Regarding knowledge updation/enhancement **42% of Students given excellent** response because students are doing Community Service Project as introduced in their curriculum, very few are given **Poor** response i.e. **1.75%**.

e. Social Utility		
Options	Responses	Percentage
POOR	2	3.51
GOOD	13	22.81
VERY GOOD	14	24.56
EXCELLENT	28	49.12
<b>TOTAL</b>	<b>57</b>	<b>100</b>



Various activities are done related to social services, so the 49% of teachers given excellent response, **24% of teachers** given very good and very few teachers **given poor response i.e., 3.51.**

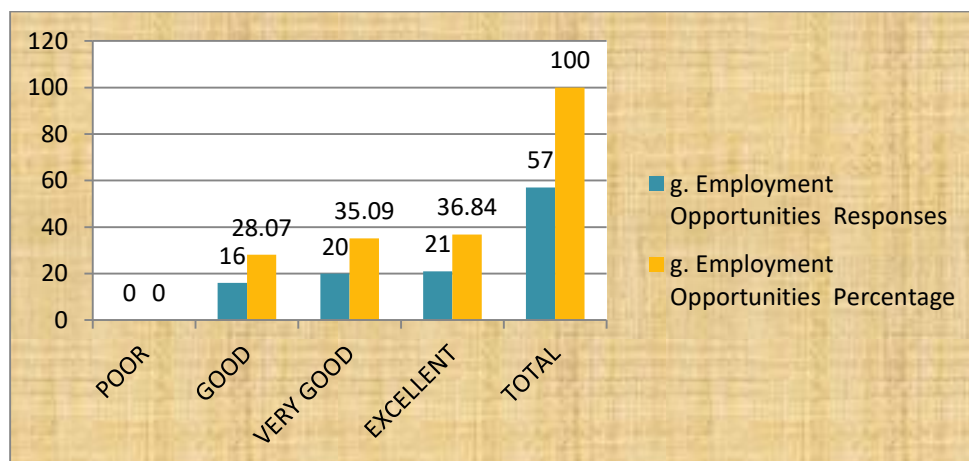
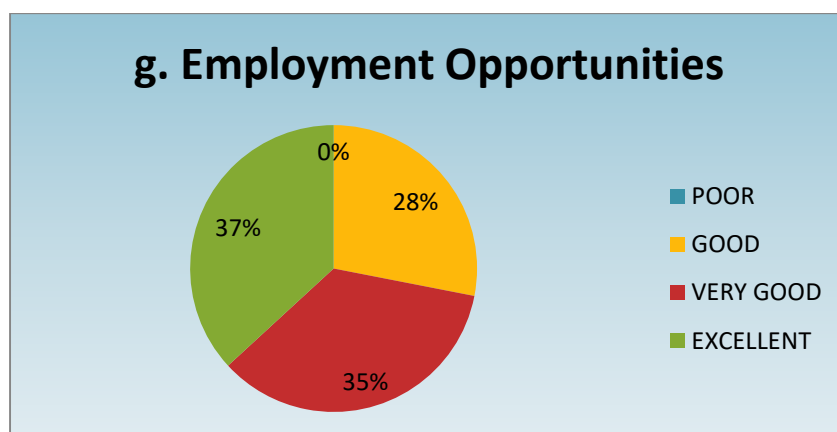
f. Personal Development		
Options	Responses	Percentage
POOR	2	3.51
GOOD	14	24.56
VERY GOOD	15	26.32
EXCELLENT	26	45.61
<b>TOTAL</b>	<b>57</b>	<b>100</b>



As JKC and English Department given training on Communication skills and technical skills, many students got benefited. So, **45% of teachers given excellent** response , 26% are given very good, 24% of teachers given good response, **3.51% are given poor response.**

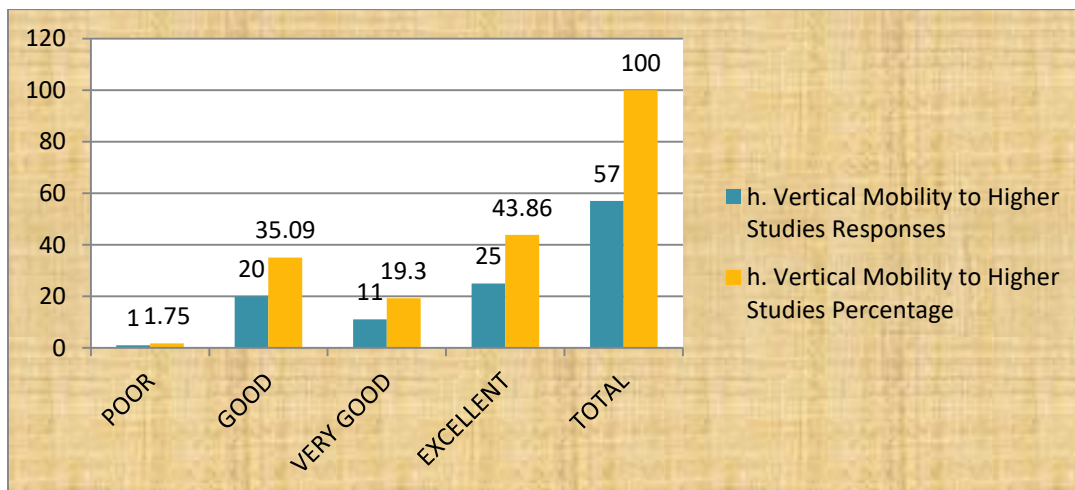
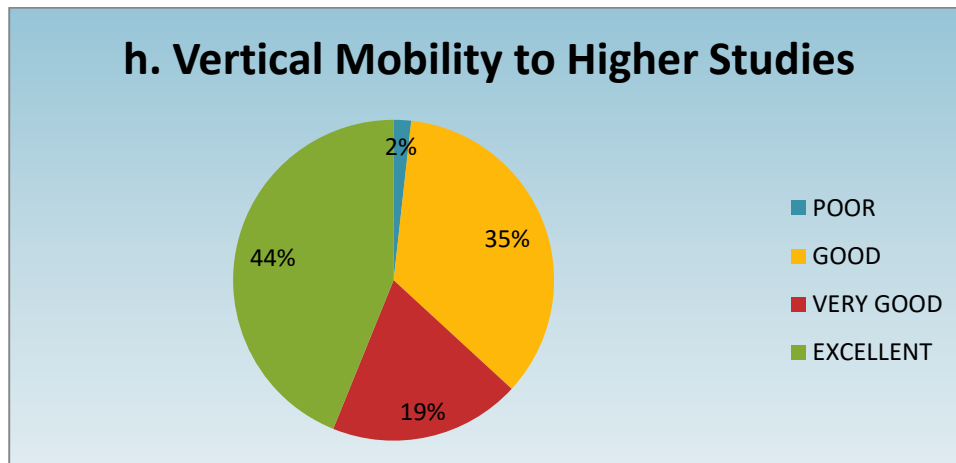


g. Employment Opportunities		
Options	Responses	Percentage
POOR	0	0.00
GOOD	16	28.07
VERY GOOD	20	35.09
EXCELLENT	21	36.84
<b>TOTAL</b>	<b>57</b>	<b>100</b>



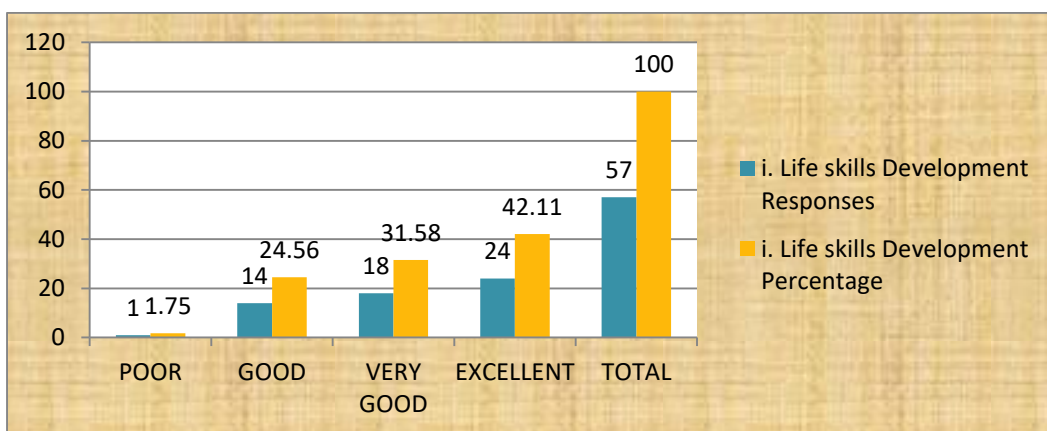
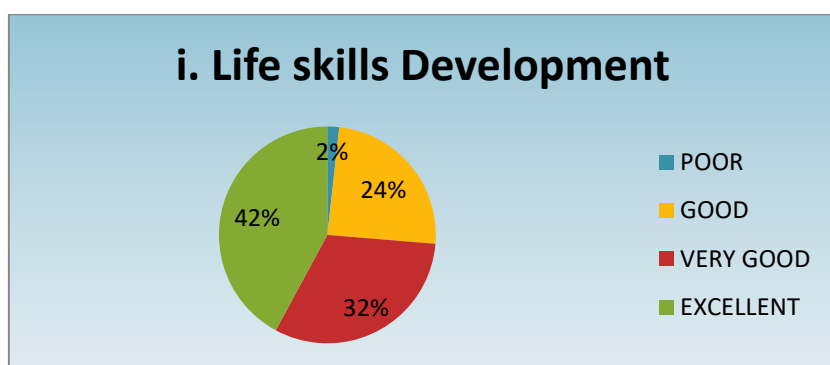
Students got opportunities Job drives conducted by JKC in Institution for this 36% of teachers given excellent response , **35% of teachers they have given good response, 0% of teachers given poor response.**

h. Vertical Mobility to Higher Studies		
Options	Responses	Percentage
POOR	1	1.75
GOOD	20	35.09
VERY GOOD	11	19.30
EXCELLENT	25	43.86
<b>TOTAL</b>	<b>57</b>	<b>100</b>



Most of the teachers in the Institution given training and provided material to crack PG Entrance examinations by the students. So, **25% of teachers given excellent response**, very few teachers are given poor response.

Life skill Development		
Options	Responses	Percentage
POOR	1	1.75
GOOD	14	24.56
VERY GOOD	18	31.58
EXCELLENT	24	42.11
<b>TOTAL</b>	<b>57</b>	<b>100</b>



Academic curriculum having various life skill courses, so every department they need to choose LSC, students got benefited from these courses. So, **42% of teachers given excellent feedback**, 31% of teachers given very good response, 24% of teachers given good response, very few teachers given **poor response i.e., 1.75%**.